



October 18, 2017

[DCWATER.COM](http://DCWATER.COM)

1. Team Introduction
2. The Potomac Interceptor
3. Rehabilitation of Manhole 31 to Manhole 30
4. Current status & timeframes
5. Odor control facility
6. What's next
7. Question & answer session



DC Water Potomac Interceptor:

- Emanuel Briggs – Community Outreach Manager
- Getachew Melsew – Planning Branch Manager
- Suha Atiyeh – Project Manager
- Eyasu Yilma – Manager, Operations
- Qwendolyn Brown – Real Estate Subject Matter Expert



3 of 23

DCWATER.COM

Primary Objective:

- Provide the property owners with an update on the rehabilitation status of the pipe from MH 31 to MH 30

Also Included:

- Update on the odor control facility
- Resident question & answer session

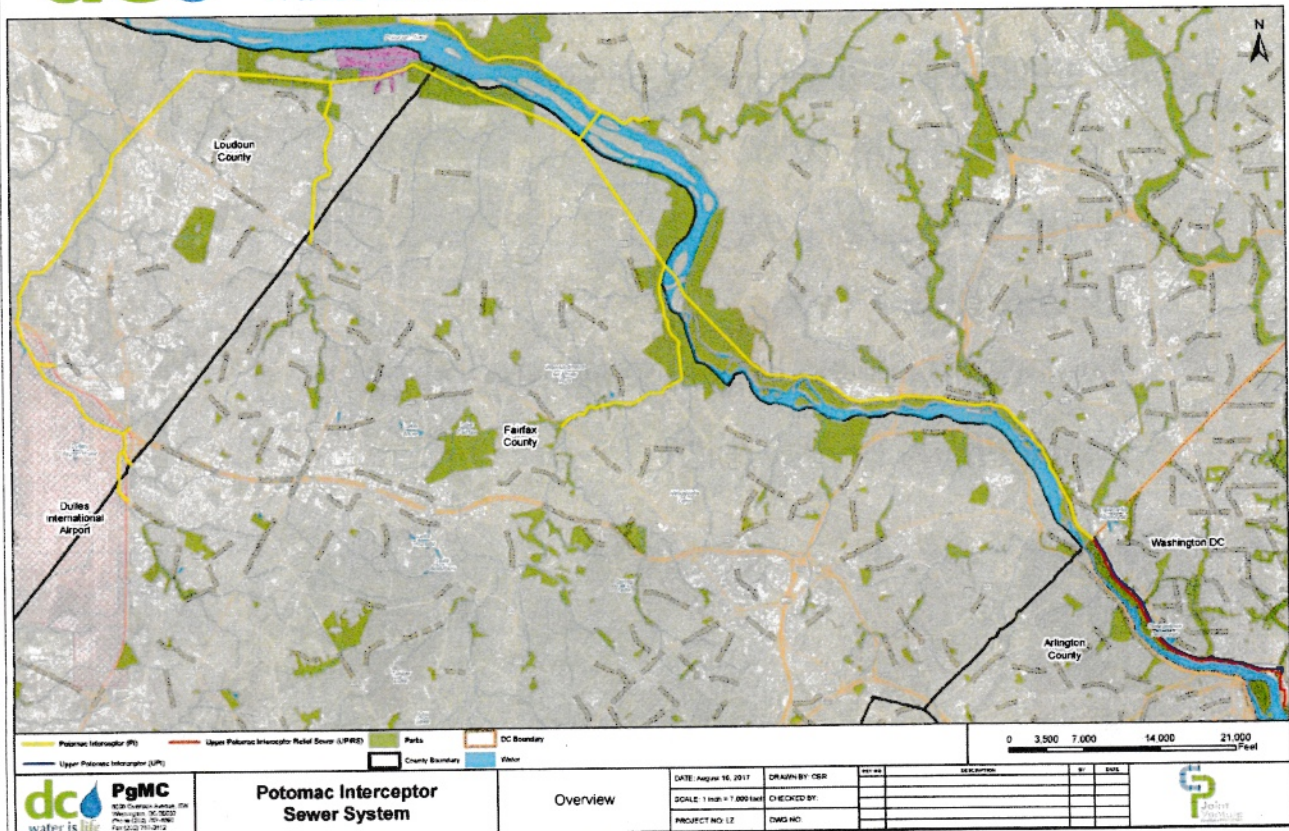
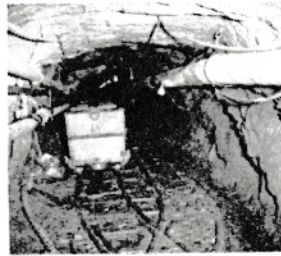


4 of 23

DCWATER.COM



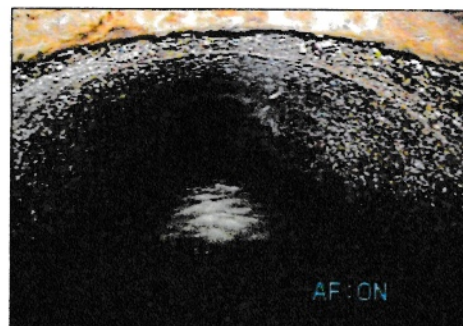
- The Potomac Interceptor (PI) is a sewer system which conveys about 60 million gallons per day (MGD) of sewerage from Dulles International Airport in Virginia to the Potomac Pumping Station (PS) in DC.
- Flows from the PS are pumped to the Blue Plains Advanced Wastewater Treatment Plant for treatment before discharge into the Potomac River.
- The PI has been in service since 1963.





## Summary:

- Total length of pipe = 53.1 miles
- Minimum pipe diameter = 15"
- Maximum pipe diameter = 96"
- Majority of the PI is composed of reinforced concrete pipe (RCP)
- Six odor control facilities exist along the PI



Several jurisdictions discharge wastewater flow into the PI:

- Town of Vienna (VA)
- Loudoun County (VA)
- Fairfax County (VA)
- Washington Dulles International Airport (VA)
- Montgomery County (MD)



Key coordination agencies:

- National Park Service (NPS)
- Northern Virginia Regional Park Authority (NVRPA)
- Army Corps of Engineers
- Fairfax Water
- Loudoun Water



US Army Corps  
of Engineers®

LOUDOUN WATER



Fairfax Water



9 of 23

DCWATER.COM

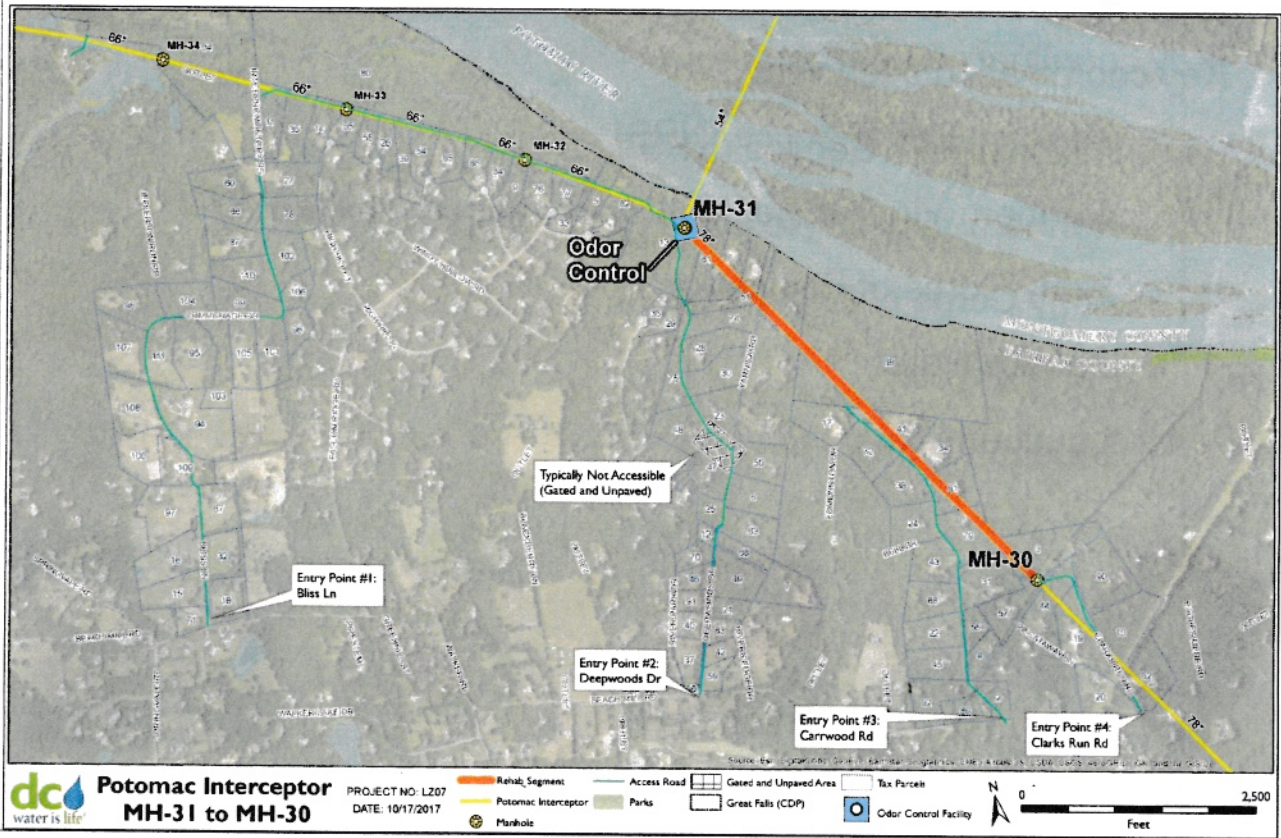
## Rehabilitation of Pipe Segment: Manhole 31 to Manhole 30



10 of 23

DCWATER.COM



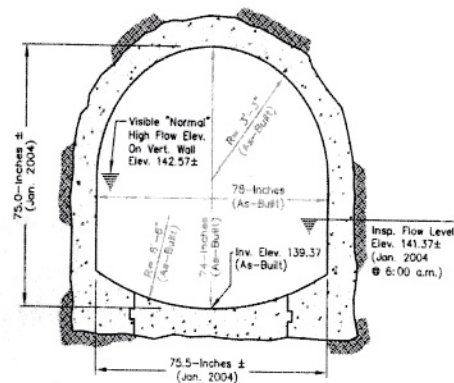


Purpose of rehabilitation:

- To extend the service life of the pipe

Pipe segment MH 31 – MH 30:

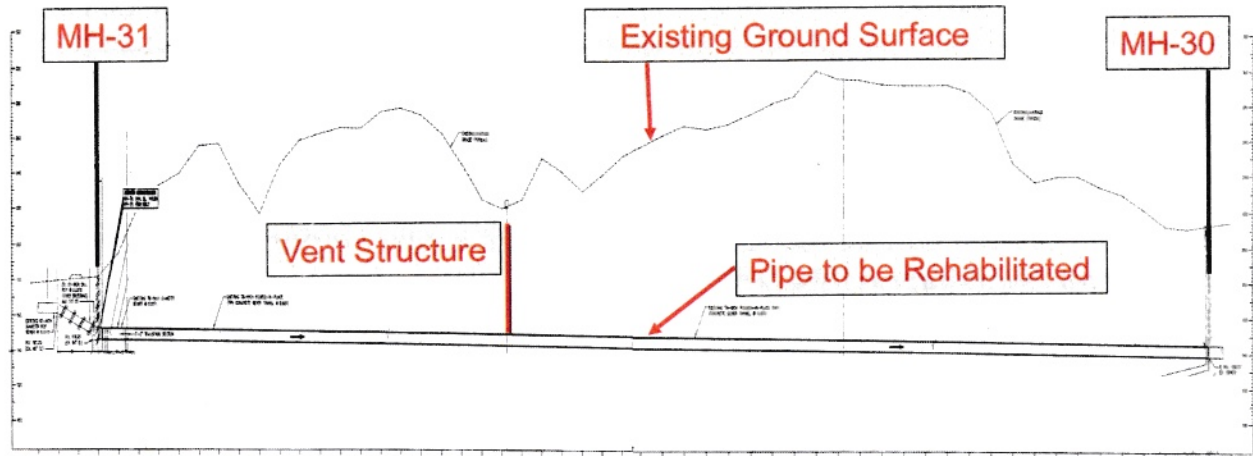
- 5,300 linear feet, approximately 1 mile long
- 78" basket handle shaped tunnel
- Constructed of poured-in-place concrete



Pipe cross section

Pipe segment MH 31 – MH 30:

- Installed via tunneling
- Several areas of the pipe are in excess of 100 feet in depth



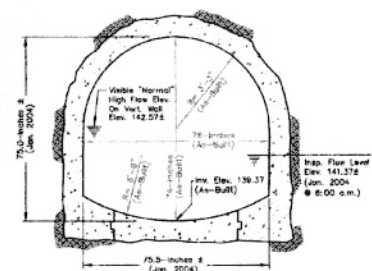
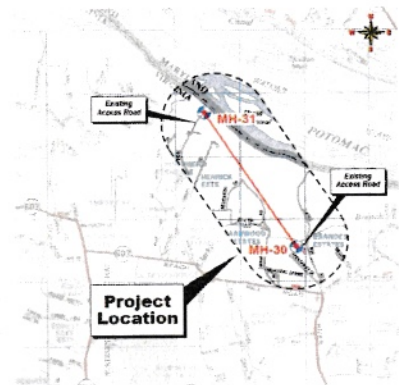
Longitudinal profile of pipe

13 of 23

DCWATER.COM

Challenges:

- Two pipe segments connect into MH 31
- Pipe alignment traverses under properties
- Limited construction staging area
- Requires deep excavation
- The roads which are needed to access the pipe are typically owned by homeowners
- Restrictions on the size of construction delivery vehicles on private roads



14 of 23

DCWATER.COM



Phase	Projected Timeframes
Planning & Easement Phase	Current – 4 <sup>th</sup> Quarter 2019
Design Engineering Phase	4 <sup>th</sup> Quarter 2018 – 4 <sup>th</sup> Quarter 2019
Construction Phase	1 <sup>st</sup> Quarter 2020 – 4 <sup>th</sup> Quarter 2021

Current status:

- Project is still scheduled for rehabilitation, it is still a priority and we are actively working on this project

Note:

\* The above timeframes are targets and are subject to change and subject to sufficiency of available funding

\* DC Water plans to inform the property owners of updates to this schedule

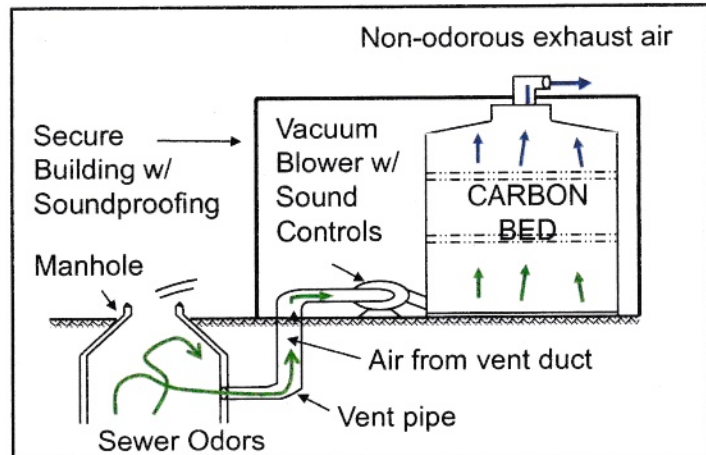


## Odor Control Facility Update





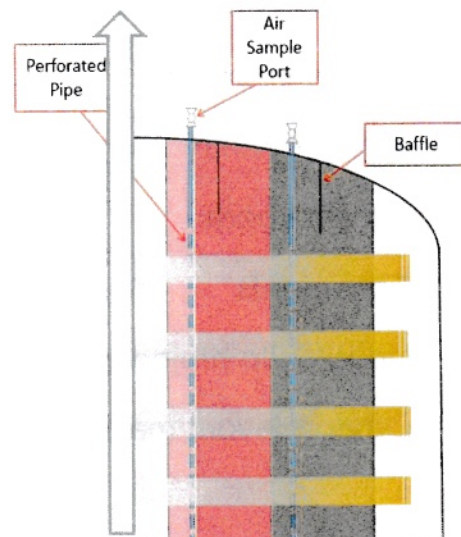
- Odor control facility at Site 31 is in service
- Provides long-term control of odors
- Reduces hydrogen sulfide gases in the PI



17 of 23

DCWATER.COM

- Media replenishment status
- Real-time odor monitoring device status
- Alarm status



18 of 23

DCWATER.COM



## What's Next

- Plan to continue community outreach
- Notification of investigations including information on:
  - Field survey
  - Rights of entry
  - Access roads
  - Easements
  - Updates to projected timeframes
  - Other relevant matters as necessary







## Resident Question & Answer Session



21 of 23

DCWATER.COM

## Contact Information

DC Water Community Outreach Manager:

- Emanuel Briggs
- Email: [Emanuel.Briggs@dcwater.com](mailto:Emanuel.Briggs@dcwater.com)
- Office: 202-787-2003

DC Water Construction Outreach Coordinator:

- Tanya Hedgepeth
- Email: [Tanya.Hedgepeth@dcwater.com](mailto:Tanya.Hedgepeth@dcwater.com)
- Office: 202-787-2202



22 of 23

DCWATER.COM

Thank you!

